

Concept/Preliminary Playground Design

Basic Description & Plan Summary

Currently Underway

The Town is now in possession of a gazebo. The Highway Department will be prepping the area for the gazebo when time and weather allows.

The Town has also contracted for the construction of a footbridge that will allow pedestrian crossing of the stream near the existing playground at approximately the midpoint between the two vehicular crossings (culverts) at the east end of the Town Park. This will allow foot traffic to the playground without walking along vehicular drives.

The Playground

The new playground design is an improvement to the existing playground. This will include the introduction of additional playground equipment, becoming accessible, and a safety surface throughout. The equipment that has been selected by the committee includes two (2) large pieces that are accessible, sensory boards, musical devices and some miscellaneous equipment. The following is a list of the proposed new equipment:

- We-Go-Round with Digifuse Panel (accessible riding spinner)
- Sway Fun Glider (accessible rocker/glider)
- Sign Language Panel (sensory board)
- Optigear Panel (sensory board)
- Kaleidospin Panel (sensory board)
- Ball Maze Panel (sensory board)
- Gear Panel (sensory board)
- Flowers (musical)
- Tuned Drums (musical)
- Chill Spinner (miscellaneous, ADA)
- Climb and Discover Cave (miscellaneous)
- Wheel Thru Arcade (miscellaneous, accessible)

A detailed description of each item above is attached to this synopsis.

Cost Control

To be sensitive to the potential cost of the above, plus the safety surface, all construction and installation, plus the current upheaval and unknowns in construction costs, the bid package will be formulated in a way that the construction/installation costs can be under the control of the Town/Town Board. To accomplish this, the bid package (typical "Front End" information, instructions, Bid Forms, declarations, Prevailing Wage Rates, Construction Specifications, Construction Drawings) will be set up for bidding in the following manner. There will be a "Base Bid" with "Add Alternates". The Base Bid will include those construction actions that are the minimum desired. The Add Alternates will be additional construction for items that are wanted but will only be accepted if the pricing fits the amount of monies available. This should give the Town the flexibility for determining the final construction

costs without going through multiple re-bidding efforts (but no guarantee).

To meet the intent of the Park Master Plan and the Grant that has been awarded, certain project goals must be maintained. The criteria for the playground design was geared to inclusion, ADA accessibility, and enjoyment. These are also some of the reasons for having won the grant from NYS Parks and Recreation. While the creation of a new playground area was the original intent, the cost of construction now is far greater than what was envisioned since the Park Master Plan was created and accepted. Nonetheless, the basic goals must and should remain. Given that, the following will be part of the “Base Bid” for the project:

- Purchase and installation of the two (2) large playground equipment devices (the We-Go-Round and the Sway Fun Glider).
- The removals needed for the installation and grading of the compacted gravel base for the safety surfacing throughout the entire playground area.
- The construction of Accessible Parking near the playground with an access pathway to the playground.
- The construction of pathways from the playground to the, and past the, gazebo to the footbridge and from the footbridge to the already constructed trail network.

“Add Alternates” will be the other listed playground equipment above. These will be broken out separately for bidding by each equipment piece (i.e.: Kaleidospin Panel, Tuned Drums, Wheel Thru Arcade, etc.).

For clarity, and as an example with completely made up numbers, the bids received can look something like this:

Base Bid:	\$500.00
Add Alt. 1	\$50.00
Add Alt. 2	\$75.00
Add Alt. 3	\$35.00
Add Alt. 4	\$65.00

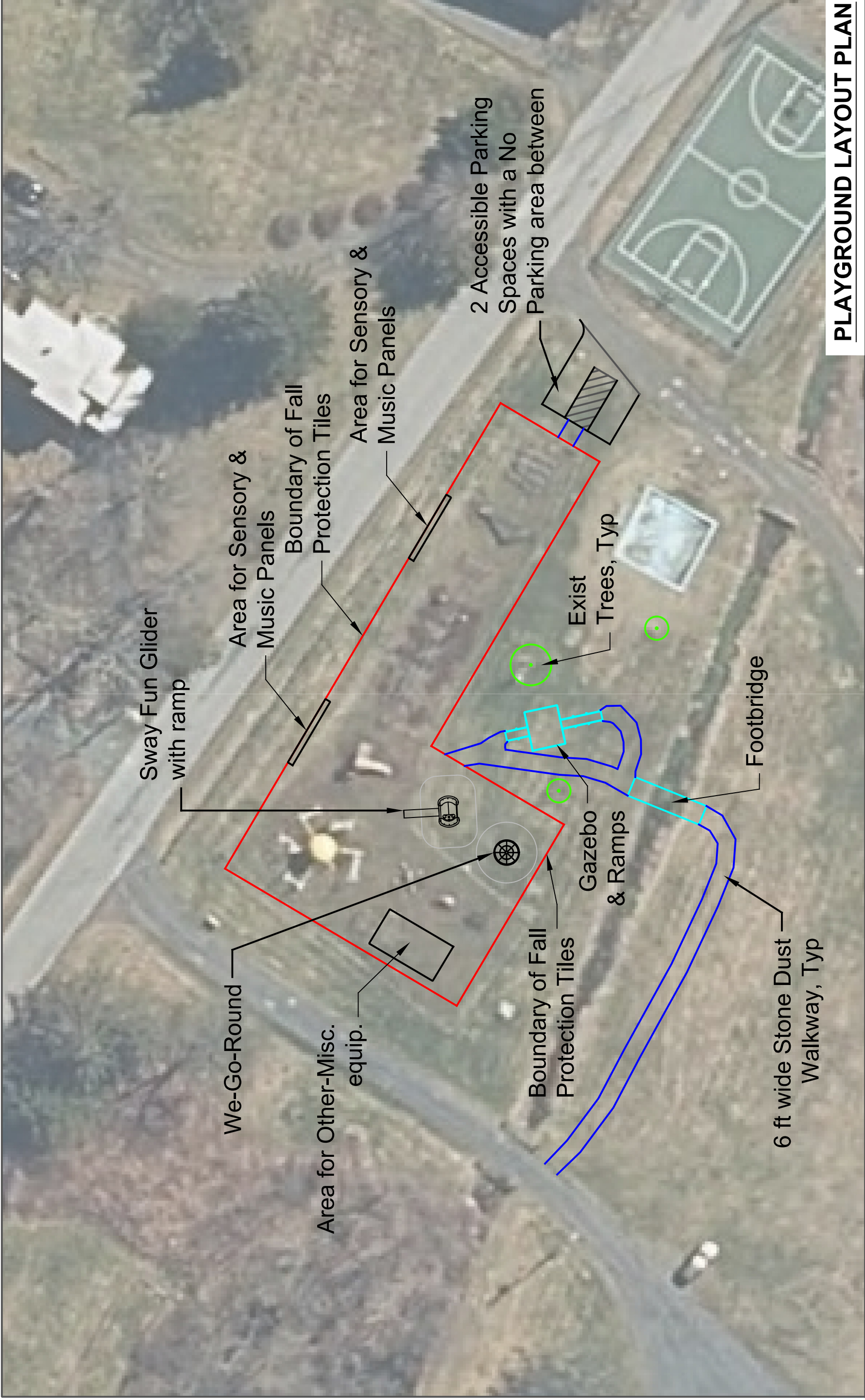
The selection of what to enter into a contract on will be based upon totals. With a \$600.00 budget, just do the Base Bid work (this is suggested as there can always be unforeseen conditions that can escalate the construction costs during the performance of the construction; better safe than needing to reach into your pocket). With a \$700.00 budget, the work for the Base Bid plus Add Alternates 2 and 3 can be done (\$610.00).

The grant funding also allows the Town to perform construction through their own forces and counts toward the Town's share of the costs under the grant. This is another way to give more “bang for the buck”, so-to-speak.

There is also another potential cost saving method. This would involve the pre-construction purchase of the equipment for the Base Bid playground play items. This will require some thought on the availability of storage for same (protection from the elements and minimizing thievery and deliberate destruction). It also runs the risk of not receiving acceptable bid costs for the installation/construction thereby owning items that will not be constructed/installed.

Conceptual/Preliminary Plan

Attached is an 11x17 plan for the “upgraded/improved” playground.



PLAYGROUND LAYOUT PLAN

[Home](#) > [Products](#) > [Playground Components](#) > [We-Go-Round® with DigiFuse® Panels](#)

We-Go-Round® with DigiFuse® Panels

Model #249558



Product Details



Age Ranges

- 2 to 5 years
- 5 to 12 years
- 13+ years

Play Styles

[Inclusive Play](#)

Product Categories

[Freestanding Play](#)

Shipping Weight

2,165 lbs

Dimensions

- ASTM Max Fall Height: 40" (1.02 m)
- ASTM Minimum Area Required: 20' 10" (6.35 m) diameter

Design/CAD Files for this Freestanding Play Element

- [Download Design 6221 - 2D DWG](#)
- [Download Design 6221 - 2D PDF](#)
- [Download Design 6221 - 3D PDF](#)
- [Download Design 6221 - SketchUp](#)
- [Download Design 8530 - 2D DWG](#)
- [Download Design 8530 - 2D PDF](#)
- [Download Design 8530 - 3D PDF](#)

Design Standards Certified

- [ASTM](#)
- [CSA](#)
- [EN](#)

Price Range (USD)

\$20K-\$50K

*Prices vary. For international and exact pricing, contact your local playground consultant.

[Contact Your Consultant](#)

Product Overview and Features

Overview

The We-Go-Round® with DigiFuse® panels is fully wheelchair accessible and allows kids of all abilities to interact in a themed environment. It can be turned from the inside or outside, allowing everyone to participate in the fun.

Features

- Base is flush with surrounding surfacing for easy wheelchair roll-on
- Available with two or three benches, leaving ample room for wheelchairs
- All users face the center for better interaction and inclusion
- Handhold on center post allows users to participate in the movement
- Integrated speed control for fun, yet safe, rotation
- All working mechanisms above grade for easy maintenance
- Roof provides shade while playing, and is made from durable, UV-stable rotomolded polyethylene in your choice of color

- Nine standard themes available: Farm, Space, Nature, Transportation, Music, Abstract, Seasons, Kites, Ocean
 - Choice of ProShield® colors for post and frame
 - Choice of Permalene® color for benches and handhold
 - Also available with perforated side panels (model #248819)
 - Also available in HDG (model #251036 or model #251037)
 - Direct bury only, requiring a footing 42" deep and 48" square
 - U.S. Patent Numbers 9,868,069 and 10,717,012
-



ProShield® Finish



Polyethylene



Recycled Permalene®

Color is an important decision, and we've curated color palettes to match a variety of aesthetics. If this product includes materials with color options, they are shown above.

[Learn about color inspiration](#)

Sensory

- Proprioception

- Vestibular +

Motor Skills

- Balance
- Core Body Strength
- Lower Body Strength
- Upper Body Strength

Cognitive Skills

- Problem Solving

Social/Emotional Skills

- Cooperation
- Imaginative Play
- Social Skill Development

[Learn about Developmental Benefits](#)

Related Playground Components



We-Go-Round® with Perforated Panels

Age Ranges: **2 to 5 years, 5 to 12 years, 13+ years**

Price Range (USD): **\$20K-\$50K**

We-Go-Round® with Perforated Panels

Age Ranges:

Price Range (USD):



Also of Interest:

[We-Go-Round® - Inclusive merry-go-round](#)

[We-Go-Round® with Perforated Panels](#)

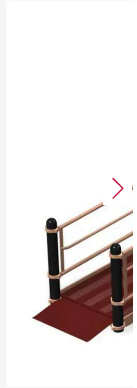
[We-Go-Swing®](#)

[Model Release Form](#) [Login](#) [Sitemap](#) [Careers/Jobs](#) [Privacy](#) [Virtual Catalogs](#) [Contact Us](#)

©2025 Landscape Structures Inc. All Rights Reserved.

Sway Fun® w/12' Ramp Assembly

Model #177140



Product Details



Age Ranges

- 2 to 5 years
- 5 to 12 years

Play Styles

[Inclusive Play](#)

Product Categories

[Freestanding Play](#)

Shipping Weight

2,193 lbs

Dimensions

- ASTM Max Fall Height: 12" (0,30 m)
- ASTM Minimum Area Required: 24' 9" x 27' 2" (7,54 m x 8,28 m)

Design/CAD Files for this Freestanding Play Element

- [Download Design 3294 - 2D DWG](#)
- [Download Design 3294 - 2D PDF](#)
- [Download Design 3294 - 3D PDF](#)
- [Download Design 8515 - 2D DWG](#)
- [Download Design 8515 - 2D PDF](#)
- [Download Design 8515 - 3D PDF](#)

Design Standards Certified

- [ASTM](#)
- [CSA](#)

Price Range (USD)
\$20K-\$50K

*Prices vary. For international and exact pricing, contact your local playground consultant.

[Contact Your Consultant](#)

Product Overview and Features

Overview

The Sway Fun® Glider with Ramp Assembly allows children of all abilities, especially those with special mobility needs, access to Sway Fun for great peer-to-peer play. Creates equitable access for children and grown-up companions of all abilities.

Features

- Double-wall construction for durability
- Play table with cup holders and wheelchair handholds
- Room for two wheelchairs, plus two large benches for other passengers
- Steel deck for durability
- Ramp is 42" wide, 12" high and 12' long for wheelchair accessibility
- Guardrails and curbs provided on ramp
- Angled ramp exit plate connects ramp to ground



ProShield® Finish



Polyethylene



Recycled Permalene®



TenderTuff™ Coating

Color is an important decision, and we've curated color palettes to match a variety of aesthetics. If this product includes materials with color options, they are shown above.

[Learn about color inspiration](#)

Developmental Benefits

Sensory

- Proprioception
- Tactile
- Vestibular +

Motor Skills

- Agility
- Balance
- Coordination
- Core Body Strength
- Flexibility
- Lower Body Strength
- Motor Planning

Cognitive Skills

- Problem Solving

Social/Emotional Skills

- Cooperation
- Imaginative Play
- Social Skill Development

[Learn about Developmental Benefits](#)

Related Playground Components



[Sway Fun® w/12' Ramp Assembly w/Berm Plate](#)

Age Ranges: **2 to 5 years, 5 to 12 years**
 Price Range (USD): **\$20K-\$50K**



[Sway F](#)

Age Rang
 Price Ran
 (USD):



Also of Interest:

[Sway Fun® Glider \(16'\)](#)

[The Miracle League at the Langham Creek Family...](#)

02/07/2025

Freestanding Ball Maze Panel with Posts

Brand: Playground Equipment

Price: **\$1,732.00**

Product Specifications:

Age Range: 2 to 12 years old

Equipment Weight: 250 lb

Post Diameter: 3.5 in

ASTM F1487-17

Description:

The Freestanding Ball Maze Panel will have children fascinated as they turn the maze around and watch the ball navigate the nooks and crannies of the maze. It is an intricate labyrinth that starts at the outer parts of the circle and works its way toward the middle. Children can try to guide the ball through the maze by turning it, or just spin the maze and see where the ball lands and which path it will take next. The maze is deceptively challenging, but can be solved more and more quickly with some practice. The 3.5-inch galvanized steel posts provide a solid foundation for this structure, while the durable rotationally molded plastic of the panel itself is strong enough to withstand long-term normal outdoor conditions. It can be added to any play structure or used on its own. It is available in primary and neutral colors or is customizable from the wide selection of plastics and metal colors.



[Home](#) > [Products](#) > [Playground Components](#) > Gear Panel

Gear Panel

Model #184876



Product Details



Age Ranges

- 6 to 23 months
- 2 to 5 years
- 5 to 12 years

Product Categories

[Freestanding Play](#)

Shipping Weight

112 lbs

Dimensions

- Actual Size: 45" x 3" (1,14 m x 0,08 m)

Design/CAD Files for this Freestanding Play Element

- [Download Design 6735 - 2D DWG](#)
- [Download Design 6735 - 2D PDF](#)
- [Download Design 6735 - 3D PDF](#)

Design Standards Certified

- [ASTM](#)
- [CSA](#)
- [EN](#)

Price Range (USD)
\$0K-\$5K

*Prices vary. For international and exact pricing, contact your local playground consultant.

Contact Your Consultant

— Product Overview and Features

Overview

The Learning Wall Gear Panel gets little inventors and engineers excited! This learning component complements any PlayShaper playground or playstructure.

Features

- Choose one Permalene® color for the panel and another for the gears
- Clear movement
- Covered in polycarbonate to protect fingers
- Fun for kids of all ages and abilities
- Lets kids see cause-and-effect action
- Visible from both sides
- Learning Wall Posts must be purchased separately

— Color and Materials



Recycled Permalene®

Color is an important decision, and we've curated color palettes to match a variety of aesthetics. If this product includes materials with color options, they are shown above.

[Learn about color inspiration](#)

— Developmental Benefits

Sensory

- Proprioception
- Visual

Motor Skills

- Eye-Hand Coordination
- Motor Planning

Cognitive Skills

- Problem Solving
- Strategic Thinking

Social/Emotional Skills

- Cooperation
- Imaginative Play
- Social Skill Development

[Learn about Developmental Benefits](#)

Related Playground Components



[Ring-a-Bell™ Panel](#)

Age Ranges: **2 to 5 years, 5 to 12 years**

Price Range (USD): **\$0K-\$5K**

[Mirror](#)

Age Rang

Price Ran (USD):



Also of Interest:

[TopsyTurny® Spinner](#)

[Ball Maze Panel Playground Component](#)

[Trail Tracker® Reach Panel](#)

[Model Release Form](#)

[Login](#)

[Sitemap](#)

[Careers/Jobs](#)

[Privacy](#)

[Virtual Catalogs](#)

[Contact Us](#)

©2025 Landscape Structures Inc. All Rights Reserved.

[Home](#) > [Products](#) > [Playground Components](#) > Kaleidospin Panel®

Kaleidospin Panel®

Model #168108



Product Details



Age Ranges

- 6 to 23 months
- 2 to 5 years
- 5 to 12 years

Play Styles

Inclusive Play

Sensory Diverse

Product Categories

Freestanding Play

Shipping Weight

53 lbs

Dimensions

- Actual Height: 48" (1,22 m)
- Actual Size: 7' 3" x 3' 1" (2,21 m x 0,94 m)

Design/CAD Files for this Freestanding Play Element

- [Download Design 3864 - 2D DWG](#)
- [Download Design 3864 - 2D PDF](#)
- [Download Design 3864 - 3D PDF](#)
- [Download Design 3864 - SketchUp](#)
- [Download Design 7983 - 2D DWG](#)
- [Download Design 7983 - 2D PDF](#)
- [Download Design 7983 - 3D PDF](#)

Design Standards Certified

- ASTM**
- CSA**
- EN**

Price Range (USD)

\$0K-\$5K

*Prices vary. For international and exact pricing, contact your local playground consultant.

[Contact Your Consultant](#)

Product Overview and Features

Overview

The Sensory Development Kaleidospin Panel® provides an engaging experience that indulges the senses and has great visual stimulation.

Features

- 2-sided panel allows children to view the world from either side or look at each other in creative ways
- Polished, stainless steel prisms and kid-operated eyepiece offer rich visual stimulation
- Promotes exploration and discovery
- Sensory Play Center Walls (Item #168100) and Ends (Item #168101) must be purchased separately.
- U.S. Patent No. 8,936,502

— Color and Materials



Recycled Permalene®

Color is an important decision, and we've curated color palettes to match a variety of aesthetics. If this product includes materials with color options, they are shown above.

[Learn about color inspiration](#)

— Developmental Benefits

Sensory

- Proprioception
- Visual

Motor Skills

- Eye-Hand Coordination
- Motor Planning

Cognitive Skills

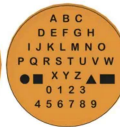
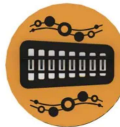
- Problem Solving
- Strategic Thinking

Social/Emotional Skills

- Cooperation
- Imaginative Play
- Social Skill Development

[Learn about Developmental Benefits](#)

Related Playground Components



Xylofun and Alphamaze Panel™

Age Ranges: 6 to 23 months, 2 to 5 years, 5 to 12 years

Price Range (USD): \$0K-\$5K

Bongo

Age Rang

Price Ran (USD):



Also of Interest:

Commercial Sensory Playground Equipment

Xylofun Panel®

Marble Panel®

Optigear Panel®

Model #168104



Product Details



Age Ranges

- 6 to 23 months
- 2 to 5 years
- 5 to 12 years

Play Styles

Inclusive Play
Sensory Diverse

Product Categories

Freestanding Play

Shipping Weight

41 lbs

Dimensions

- Actual Height: 48" (1,22 m)
- Actual Size: 7' 3" x 3' 1" (2,21 m x 0,94 m)

Design/CAD Files for this Freestanding Play Element

- [Download Design 2720 - 2D DWG](#)
- [Download Design 2720 - 2D PDF](#)
- [Download Design 2720 - 3D PDF](#)
- [Download Design 8388 - 2D DWG](#)
- [Download Design 8388 - 2D PDF](#)
- [Download Design 8388 - 3D PDF](#)

Design Standards Certified

- ASTM
- CSA
- EN

Price Range (USD)
\$0K-\$5K

*Prices vary. For international and exact pricing, contact your local playground consultant.

Contact Your Consultant

Product Overview and Features

Overview

The Sensory Play Center Optigear Panel® is a fun way for kids to get visual sensory input and develop dexterity. Encourages cognitive and fine-motor development.

Features

- Interactive cause-effect activity
- Visually stimulating
- Encourages dexterity development
- Handle ergonomically designed for all users
- Sensory Play Center Walls (Item #168100) and Ends (Item #168101) must be purchased separately.
- U.S. Patent No. 8,936,502

— Color and Materials



Recycled Permalene®

Color is an important decision, and we've curated color palettes to match a variety of aesthetics. If this product includes materials with color options, they are shown above.

[Learn about color inspiration](#)

— Developmental Benefits

Sensory

- Proprioception
- Visual

Motor Skills

- Eye-Hand Coordination
- Motor Planning

Cognitive Skills

- Problem Solving
- Strategic Thinking

Social/Emotional Skills

- Cooperation
- Imaginative Play
- Social Skill Development

[Learn about Developmental Benefits](#)

Related Playground Components



Marble Panel®

Age Ranges: 6 to 23 months, 2 to 5 years, 5 to 12 years

Price Range (USD): \$0K-\$5K



Bongo

Age Rang

Price Ran (USD):



Also of Interest:
Focal® Sensory Wall
Xylofun Panel®
Marble Panel®

Sign Language Panel

Model #188835



Product Details



Age Ranges

5 to 12 years

Play Styles

[Inclusive Play](#)

Play Systems

[PlayBooster®](#)

Design/CAD Files Featuring this Component

- [Download Design 8529 - 2D DWG](#)
- [Download Design 8529 - 2D PDE](#)
- [Download Design 8529 - 3D PDE](#)
- [Download Design 8530 - 2D DWG](#)
- [Download Design 8530 - 2D PDE](#)
- [Download Design 8530 - 3D PDE](#)

Design Standards Certified

- [ASTM](#)
- [CSA](#)
- [EN](#)

Price Range (USD)
\$0K-\$5K

*Prices vary. For international and exact pricing, contact your local playground consultant.

[Contact Your Consultant](#)

Product Overview and Features

Overview

Children and adults of all abilities will have fun learning the American Manual Alphabet with the PlayBooster® Sign Language Panel.

Features

- Alphabet engraved on both sides of panel
- Durable 3/4" Permalene® material
- 36" W x 41" H
- Ground-level and deck mount options

— Color and Materials



ProShield® Finish



Recycled Permalene®

Color is an important decision, and we've curated color palettes to match a variety of aesthetics. If this product includes materials with color options, they are shown above.

[Learn about color inspiration](#)

— Developmental Benefits

Sensory

- Proprioception
- Tactile
- Visual

Motor Skills

- Eye-Hand Coordination
- Fine Motor
- Motor Planning

Cognitive Skills

- Problem Solving
- Strategic Thinking

Social/Emotional Skills

- Cooperation
- Imaginative Play
- Social Skill Development

[Learn about Developmental Benefits](#)



Flower Playground Musical Instruments

NA

\$5,699

 Fully customizable

 Manufactured in the USA!


Add to cart

DESCRIPTION 

ADA Compliant: Yes

Set of 4

Be sure to check out all of our [playground accessories](#) for our full assortment or contact us to [design a playground](#) to meet your needs! Did you know we offer [playground design](#) and [playground installation](#) too? Playgrounds Etc offer start-to-finish site planning, safe and fun products, and installation of commercial playground equipment in Texas!

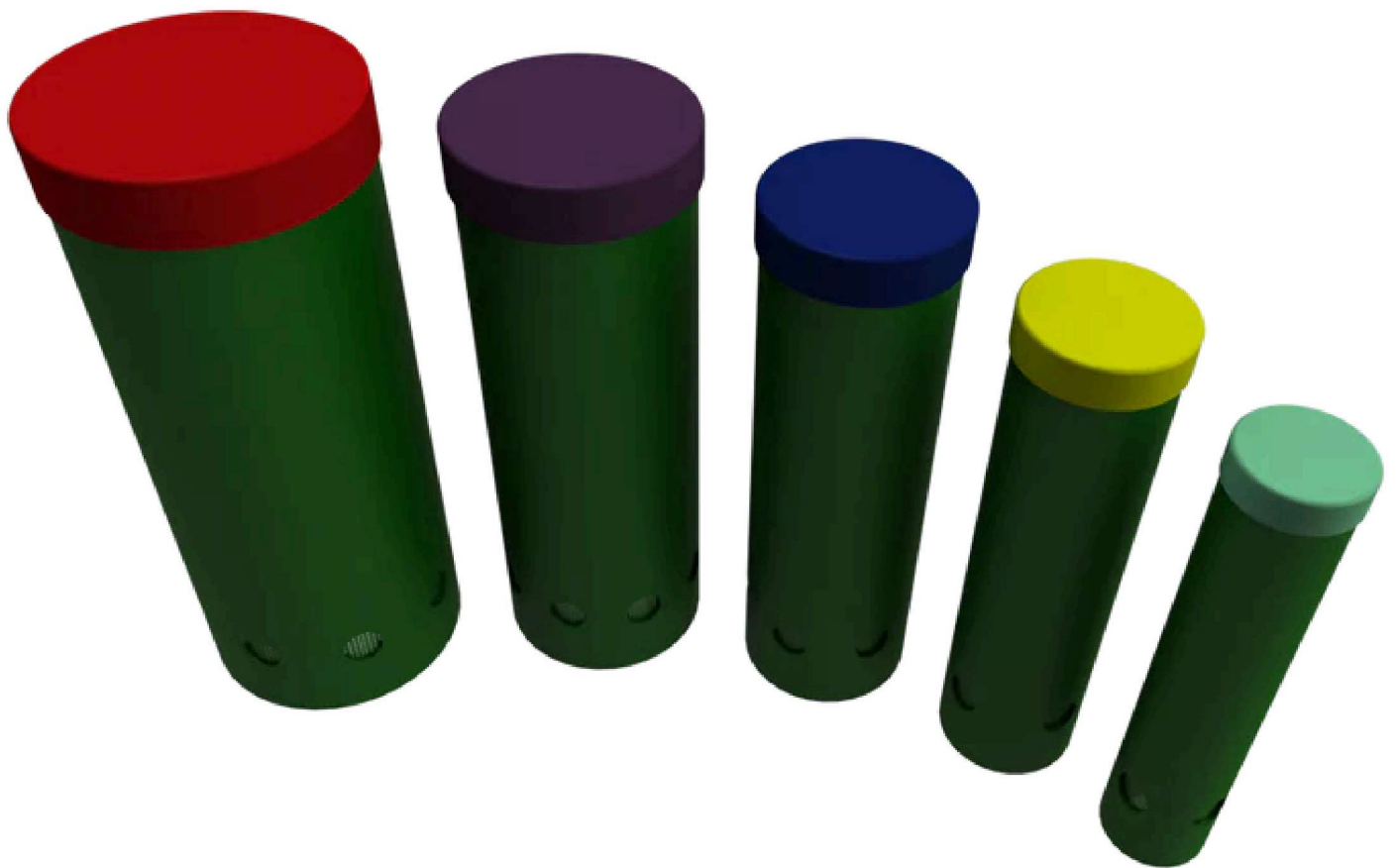
GET A QUOTE 

You may also like



[Outdoor Playgrounds](#) ▾ [Indoor Playgrounds](#) ▾


[Sports & Park Amenities](#) ▾ [Our Playgrounds](#) [About Us](#) ▾ [Contact](#)



Tuned Drums Playground Musical Instruments

TD-IG-N-SRP

\$4,349

 Fully customizable

 Manufactured in the USA!

Add to cart

DESCRIPTION



GET A QUOTE



You may also like

[Home](#) > [Products](#) > [Playground Components](#) > Chill® Spinner

Chill® Spinner

Model #247189



Product Details



Age Ranges

5 to 12 years

Product Categories

[Freestanding Play](#)

Shipping Weight

92 lbs

Dimensions

- ASTM Max Fall Height: 19" (0,48 m)
- ASTM Minimum Area Required: 14' 8" (4,47 m) diameter

Design/CAD Files for this Freestanding Play Element

- [Download Design 6224 - 2D DWG](#)
- [Download Design 6224 - 2D PDF](#)
- [Download Design 6224 - 3D PDF](#)
- [Download Design 6235 - 2D DWG](#)
- [Download Design 6235 - 2D PDF](#)
- [Download Design 6235 - 3D PDF](#)
- [Download Design 6235 - SketchUp](#)

Design Standards Certified

- [ASTM](#)
- [CSA](#)
- [EN](#)

Price Range (USD)

\$0K-\$5K

*Prices vary. For international and exact pricing, contact your local playground consultant.

[Contact Your Consultant](#)

— Product Overview and Features

Overview

Take a fun spin on the Chill® Spinner or just relax in its comfortable seat. The spinning motion offers vestibular stimulation and helps kids understand centrifugal force and cause-and-effect. Textured rubber belting creates a comfortable and secure ride.

Features

- Comfortable seat for relaxing or spinning
- Seat height allows users to be in control of the movement
- Available in your choice of ProShield® color
- Also available in stainless steel finish (model #249557)
- Direct bury or surface mount

— Color and Materials



ProShield® Finish

Color is an important decision, and we've curated color palettes to match a variety of aesthetics. If this product includes materials with color options, they are shown above.

[Learn about color inspiration](#)

— Developmental Benefits

Sensory

- Proprioception
- Vestibular +

Motor Skills

- Balance
- Core Body Strength
- Lower Body Strength

Cognitive Skills

- Problem Solving

Social/Emotional Skills

- Cooperation
- Imaginative Play
- Social Skill Development

[Learn about Developmental Benefits](#)

Related Playground Components



Chill® Spinner - Stainless Steel

Age Ranges: **5 to 12 years**
Price Range (USD): **\$5K-\$10K**

Curva®

Age Rang
Price Ran
(USD):



Also of Interest:
OmniSpin® Spinner
Saddle Spinner
Stand-Up Spinner



Search...

fun@willygoat.com
888.920.4628

Cart 0
Quote 0

Home > Climb and Discover Cave



Click on image to zoom



Climb and Discover Cave

Save \$178.90

[ULTRA PLAY SYSTEMS](#)

SKU: UP121

LEAD TIME: 6 TO 8 WEEKS

The Climb and Discover Cave invites children into a world of adventure and exploration. This innovative play structure, designed with naturalistic elements and hidden creatures, stimulates imaginative play and physical activity. Featuring large openings for easy access and supervision, it promotes safe exploration. Crafted for durability, it ensures a lasting addition to any play area. This cave encourages discovery, offering a unique blend of educational and physical play, making it an engaging choice for fostering curiosity and adventure among young explorers.

Color:



Brown

Brown Beige Red Yellow Spring Green Sandstone Deep Granite

Royal Blue Sky Purple Blue

Hand Hold Color:



Natural

Natural Playful

Price: \$5,270.10 MSRP \$5,449.00

Shipping calculated at checkout

Wheel Thru Arcade

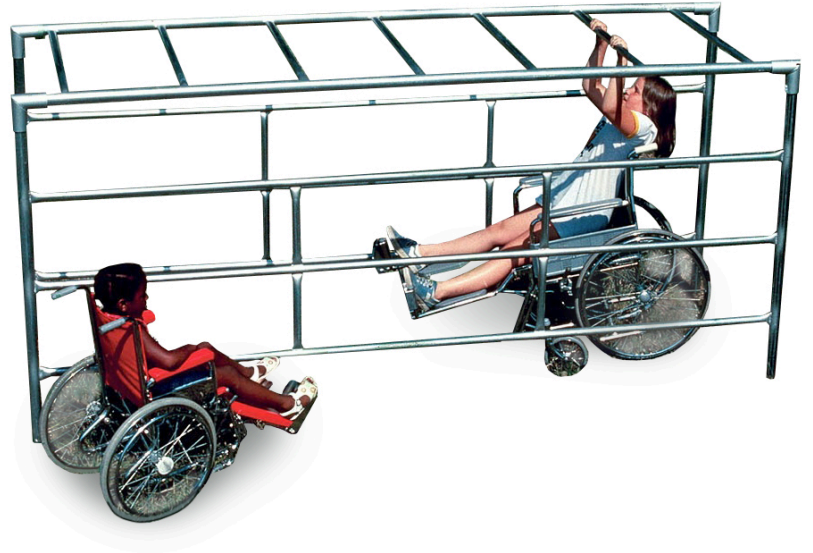
MSRP \$1,508.00

SALE \$1,267.00

Age Group: 5 to 12 years

Footprint: 10' long x 3' wide x 4' 6" high

Use Zone: 16' x 22'



The Wheel Thru Arcade allows wheelchair and ambulatory children a pulling and scaling playground event. This climber satisfies ADA guidelines. The climber is 54 inches high x 36 inches wide x 10 feet long. Safety surfacing is required.